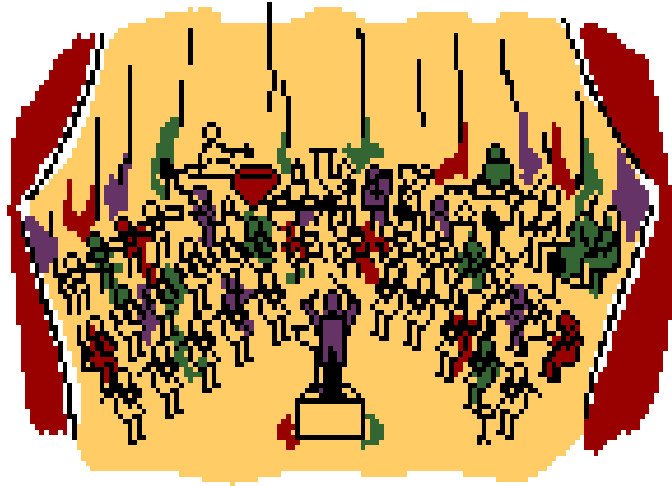


Valley Baptist Church



Praise Orchestra Handbook

2014- 2015

Instrumental Music Ministry—387-6314

Jason Armistead

Table of

Contents

Welcome from John Gage.....	1
Welcome from Pastor Roger Spradlin	4
Welcome from Pastor Phil Neighbors.....	5
10 Keys to Becoming a Loving and Gracious Praise Orchestra Member	6
Membership Requirements	11
Service Responsibilities	11
Appropriate Service Dress	12
Service & Sunday School Involvement	13
Accompanying Soloist & Ensembles	13
Television Etiquette	14
Rehearsal Schedule	14
Rehearsal Etiquette.....	15
Absence Procedures.....	15
Child Care	16
Web Site Information	17
Library Information	17
Other Groups.....	18
Officer Positions	20
Appointed Positions.....	22
Section Leader Responsibilities.....	22
Officer Nominations & Elections	23
Officer Names & Phone Numbers.....	24
Section Leader Names & Phone Numbers.....	25
Orchestra Member Roster	26
Member Anniversary Roster	30
Birthday Roster.....	31

Praise Orchestra

Welcome

WELCOME
(John G. Gage)



You have invested countless hours in developing the ability to play an instrument, and a small fortune in lessons, an instrument, mouthpieces, bows, valve oil, resin, reeds and repair. Now you and I together have the awesome privilege of offering to God the return on that investment as a sacrifice of worship. God demands and deserves our very best... and we should desire to offer Him no less. In order to offer Him our best, allow me to challenge each of us to do the following:

FAITHFULNESS: Camp Kirkland, one of America's top church music arrangers and former minister of instrumental music for 17 years at First Baptist Church, Jacksonville Fla. has only one message to church orchestras across the country.... "FAITHFULNESS".... Not to a minister of music, a pastor, a church or an orchestra, but to the King of Kings and Lord of Lords. This necessitates sacrifice of time, convenience and recreation, but the eternal benefits can not be weighed in human terms. There are times we ALL have to miss a rehearsal or a Sunday. Family priorities, illness, vacations, work schedules and other responsibilities all have to be carefully balanced, but our preparation for our role as worship leaders should be met with as much of a sense of importance as that of the pastor or minister of music. In an orchestra we are not only learning to play correct notes, but learning to play notes correctly as a team... with balance, blend and musicality...and that requires a high degree of faithfulness from each of us.

PREPARATION: Derrick Johnson, musical director for Epcot Center in Orlando, Fla., and the Epcot musical group the Voices of Liberty prays, "Lord, bless us according to our preparation." Our responsibility to offer adequately prepared accompaniment and special selections dictates that the preparation process (rehearsals) must be high on our priority list. In order to give the congregation a sense of stability, pitch reference and dramatic "color" when we accompany them, we can not take lightly our times of group preparation.

PERSONAL MUSICAL GROWTH: No matter what our level of musical ability, we could all benefit from an occasional refresher. I encourage musicians to have at least four private lessons a year in order to recall proper technique, and avoid the development of poor musical habits. We are all at various levels of musical ability, but NONE of us is as musically advanced as we could be or as we should be. I am more than willing to help you in this area if I can, or to recommend qualified instructors.

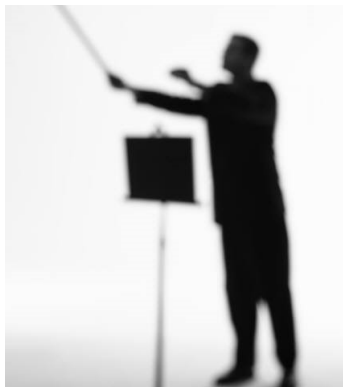
PERSONAL SPIRITUAL GROWTH: Our worship leadership each week should be an OVERFLOW of our daily walk with the Father. The single most important responsibility of any church orchestra member is the development of their personal, intimate walk with God. God can use wrong notes played with the right spirit, but will NOT use right notes played with the wrong spirit. In order to combat feelings of pride, inadequacies, unconfessed sin, division between you and a fellow believer, etc., we must maintain daily quiet time with God. I find it helpful to read 1-5 Psalms per day, early in the morning if possible, and to keep a daily prayer journal. Again if any of the pastors or I could be a resource for you in this area, it would be our privilege.

A MINISTRY OF ENCOURAGEMENT: The world famous Brooklyn Tabernacle Choir in New York City has ONE guideline. Gossip about a fellow choir member is grounds for IMMEDIATE, unqualified expulsion. Nothing will kill the spirit of a group any faster than publicly expressing dissatisfaction with another group member when that person is not present. Rumors destroy reputation, and there should be no room for conversation which tears someone else down or casts a shadow of doubt on their reputation. We in the Valley Baptist Orchestra make every attempt to build each other up, encourage each other, brag on each other, and enjoy times of fellowship and service together. We are a unique and special family, and we realize that the strength of our bond with each other will be the foundation of the strength of our ministry to VBC and the community.



The Valley Praise Orchestra provides an opportunity for those gifted in instrumental music an opportunity to use that gift for God's glory and for the edification of the body of Christ, and it is a thrill and a privilege to serve with such a fine group of dedicated musicians. We serve with 2 of the very best pastor/teachers anywhere in Roger Spradlin and Phil Neighbors, and one of the most gifted and dedicated church staffs in the Southern Baptist convention. THANK YOU for your willingness to contribute your gifts to the ministry and to that part of the body of Christ known as Valley Baptist Church.

I COR. 12: "The body is a unit, though it is made up of many parts; and though all of its parts are many, they form one body...God has arranged the parts in the body, every one of them, just as He wanted them to be...God has combined the members of the body and has given greater honor to the parts that lacked it, so that there should be no division in the body, but that its parts should have equal concern for each other."



Dear Orchestra,

The Book of Psalms in the Old Testament is God's hymn book for His people. Throughout my life and ministry, I have been blessed as I have read the Psalms.

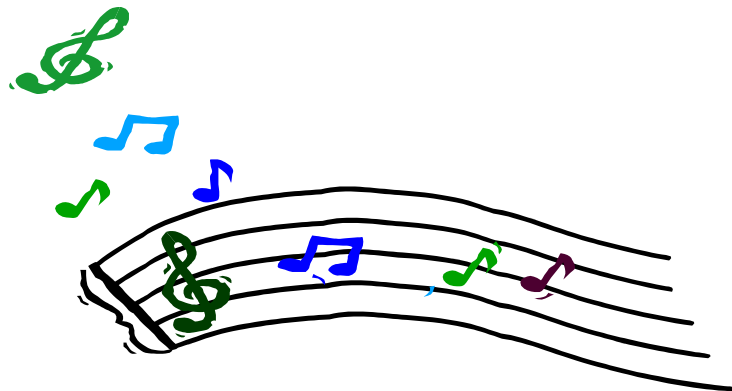
One of my favorite Psalms is 150. It is an expression of undiluted praise for our Lord! It mentions a variety of instruments to be used in our worship. It sounds a lot like an orchestra.

You must never lose sight of the idea that your playing is not simply about technical proficiency. It is about worship. Actually, it is about leading God's family in worship of our Lord.

As your pastor, I am thankful for your willingness to use your talents and invest your time in the orchestra ministry. As a fellow worshiper, I am blessed to join my heart with yours every week in praise to our great God.

Your Pastor,

Roger Spradlin



Dear Musicians,

King David was a musician. He played the harp. The ancient Jewish harp had 5 strings. The banjo has 5 strings. So when you put it all together, David must have played an ancient banjo. That's my understanding and I'm sticking with it. Instrumental music was a key component to Old Testament worship. You are following that ancient tradition of spiritual worship when you play in the orchestra each week in our services.

I have never heard you play a bad song. I know that takes practice and time. So thank you for all you do to make our worship such a blessing.

Let the band play,

Pastor Phil





Ten Keys to Becoming a Loving and Gracious Praise Orchestra Member

(Adapted from Dr. Gary Mathena and John Gage)

“Love is patient, love is kind. It does not envy, it does not boast, it is not proud. It is not rude, it is not self-seeking, it is not easily angered, it keeps no record of wrongs. Love does not delight in evil but rejoices with the truth. It always protects, always trusts, always hopes, always perseveres. (1 Corinthians 13:4-7).”

“Jesus said: “By this all men will know that you are my disciples, if you love one another” (John 13:35).

1. **We show our love for one another** when we encourage one another and never criticize anyone.

“...The LORD hates...one who sows discord among brethren.” (Proverbs 6:16, 19)

“Therefore encourage one another and build each other up.” (1Thessalonians 5:11).

“But encourage one another daily.” (Hebrews 3:13).

“Let us encourage one another.” (Hebrews 10:25).

“Brothers, do not slander one another. Anyone who speaks against his brother or judges him speaks against the law and judges it.” (James 4:11).

“The mouth of the righteous is a fountain of life.... (Proverbs 10:11).

“Reckless words pierce like a sword, but the tongue of the wise brings healing.” (Proverbs 12:18).

“The tongue that brings healing is a tree of life, but a deceitful tongue crushes the spirit.” (Proverbs 15:4).

“The tongue has the power of life and death....” (Proverbs 18:21).

2. We show our love for one another when we ignore people's mistakes—musical or otherwise. When someone misses a note or a rhythm don't turn around to see who it was. Don't laugh at or make fun of anyone. Don't make any disparaging comment under your breath.

With the tongue we praise our Lord and Father, and with it we curse men, who have been made in God's likeness. Out of the same mouth come praising and cursing. My brothers, this should not be" (James 3:9-10).

"He who covers over an offense promotes love, but whoever repeats the matter separates close friends" (Proverbs 17:9).

"Be completely humble and gentle; be patient, bearing with one another in love" (Ephesians 4:2).

3. We show our love for one another when we look our best. A large part of our effectiveness in delivering our message is our appearance. Take our clothing guidelines seriously. It is important for us to look our best every time we play. Every nationally known and respected church orchestra makes great effort to honor God in their appearance and to go the extra mile in looking like a coordinated ensemble. First Baptist, Atlanta wears tuxes and black formal dresses at EVERY service! Thousands see and hear us play each week here at home and around the world. God has seen fit to honor us by thrusting us onto the national stage. We need to show our gratitude by looking the part. Take a godly pride in our orchestra looking its best.

"For everyone to whom much is given, from him much will be required; and to whom much has been committed, of him they will ask the more" (Luke 12:48).

"And the Levites who were the singers...clothed in white linen...praised the LORD, saying: "For He is good, For His mercy endures forever" (from 2 Chronicles 5:11-13).

4. We show our love for one another when we don't personally confront anyone about their clothing or try to enforce orchestra policies on our own. If you feel something needs to be addressed with an individual, tell John or the orchestra president in private so as not to embarrass anyone. They will prayerfully minister to that person in the most appropriate way.

"Judge not, that you be not judged. For with what judgment you judge, you will be judged; and with the measure you use, it will be measured back to you. And why do you look at the speck in your brother's eye, but do not consider the plank in your own eye? (Matthew 7:1-3).

5. We show our love for one another when we consider ourselves to be the host or hostess of our orchestra as if we were welcoming people into our own home. Make everyone feel welcomed and wanted. Invite new people to sit by you.

"So Boaz said, 'Come aside, friend, sit down here.' So he came aside and sat down" (Ruth 4:1).

"A man who has friends must himself be friendly" (Proverbs 18:24).

6. We show our love for one another by not talking during rehearsal.

"A time to tear, and a time to sew; a time to keep silence, and a time to speak" (Ecclesiastes 3:7).

"Set a guard, O LORD, over my mouth; Keep watch over the door of my lips" (Psalm 141:3).

"Whoever guards his mouth and tongue keeps his soul from troubles" (Proverbs 21:23).

"How long till you put an end to words? Gain understanding, and afterward we will speak" (Job. 18:2).

"In the multitude of words sin is not lacking, But he who restrains his lips is wise" (Proverbs 10:19).

7. We show our love for one another by respecting other people's property. If you find music missing from your folder, ask our librarian for assistance. Don't take time away from rehearsal to point out errors. Doing so only compounds the problem.

"And just as you want men to do to you, you also do to them likewise" (Luke 6:31).

8. We show our love for one another by being on time. Punctuality is not holding others back with our inadequacies; it is a form of reverence which respects the time of others, and acts quickly when God and others call on us. It is realizing that time is important and that other people's time is valuable. Time is a treasure and an investment that pays off in eternity. We are not to waste or take advantage of other people's time. We are to strive to do our best with all that God has given us, including our time and the time of others.

"Don't be selfish; don't try to impress others. Be humble, thinking of others as better than yourselves. Don't look out only for your own interests, but take an interest in others, too" (Philippians 2:3-4).

"To everything there is a season, a time for every purpose under heaven" (Ecclesiastes 3:1).

"See then that you walk circumspectly, not as fools but as wise, redeeming the time" (Ephesians 5:15-16).

9. We show our love for one another by staying for the entire rehearsal which includes our technical rehearsal in the auditorium.

"And let us not grow weary while doing good, for in due season we shall reap if we do not lose heart" (Galatians 6:9).

"For you have need of endurance, so that after you have done the will of God, you may receive the promise" (Hebrews 10:36)

But he who endures to the end shall be saved" (Matthew 24:13).

10. We show our love for one another by not grumbling, griping, or complaining, but by expressing our gratitude for what God is doing in our lives through our circumstances.

“Do all things without complaining and disputing, that you may become blameless and harmless, children of God without fault.” (Philippians 2:14-15).

“Jesus therefore answered and said to them, “Do not murmur among yourselves.” (John 6:43).

*“In everything give thanks; for this is the will of God in Christ Jesus for you. Do not quench the Spirit”.
(1 Thessalonians 5:18-19).*

“Enter into His gates with thanksgiving, and into His courts with praise. Be thankful to Him, and bless His name.” (Psalm 100:4).

I believe with all my heart, that if we will prayerfully put into practice these ***Ten Keys to Being a Loving and Gracious Praise Orchestra Member***, we will create a warm and welcoming atmosphere that will help us attract and keep all the new folks that God will send us in the days ahead.

Read our theme verse:

*“Then He said to His disciples, “The harvest truly is plentiful, but the laborers are few. Therefore pray the Lord of the harvest to send out laborers into His harvest.”
(Matthew 9:37-38 NKJV).*



MEMBERSHIP REQUIREMENTS

Anyone interested in becoming a member of the Praise Orchestra comes to at least two rehearsals as a guest, plays along with their section, meets the other players and gets a feel for music difficulty, rehearsal flow and orchestra responsibilities, without the pressure of Sunday A.M. performances. **After the second rehearsal, the player meets with the director for a brief interview**, at which time musical ability level and schedule conflicts are discussed. (A playing ability on the level of a good high school player is generally sufficient to adequately play the majority of the required music for this group.) If the player and the director both feel at this point that a positive contribution could be made to this ministry, and the player's schedule will allow for regular attendance at rehearsals and services, a folder is assigned and service responsibilities are determined. If a player's ability level is not quite ready for the rigorous rehearsal and performance demands of the Praise Orchestra, Exaltation Orchestra or private instruction are good places to relearn fingering, keys, technique and muscle control.

SERVICE RESPONSIBILITIES

At this time Valley Baptist Church has two Sunday morning services in which the orchestra is involved. Service times are: 8:00 a.m. and 9:30 a.m. Players may be involved in any or all services, depending on section needs and personal schedule. FINAL service involvement determinations are made by the individual player, their section leader and the director.

The 8:00 a.m. Orchestra meets at **7:30 a.m.** in the choir room, tunes and goes over any necessary service details including a run through of that morning's opener. If orchestra is accompanying a soloist or vocal ensemble, there is a **7:15 am sound check** on stage.

The 9:30 orchestra meets in the choir room at **9:05 a.m.** and then rehearses service music with the choir. Instrument cases should be left in the backstage area on the stage left side on tables provided for that purpose, or in the orchestra rehearsal room. Cases left in the rehearsal room should be removed by 10:30 to accommodate the 11:00 Sr. Adult Sunday School class that meets in the orchestra room.

APPROPRIATE SERVICE DRESS

General Guidelines for Dress

In general, our dress should reflect a respect for the position of worship-leadership team member, and a certain amount of uniformity without sacrificing individuality.

Men:

- Short sleeved crew neck or collared knit shirts must be worn with a jacket. No short sleeve shirts without a jacket.
- Shirt and tie with a suit or dress slacks and a blazer may be worn.
- Long sleeve shirts may be worn without a jacket and pants should be dress style.
- No blue jeans and no cargos.
- Solid color pants and solid color shirts are always best.
- Stay away from solid white which glares on camera under the bright lights. Light blue or pale yellow is a better option.
- Dress shoes should be worn – no athletic shoes.
- No hats or caps or any accessories that draws attention to the wearer.

Ladies:

- Dresses or skirts must come below the kneecap when standing due to the height of the stage and choir loft. Hemlines look shorter from the congregation.
- Long dress slacks or pant suits are allowed. No cargo or capris.
- Solid colors are ALWAYS best – try to keep solid color shirts and blouses available.
- Avoid busy or flowery prints.
- Stay away from solid white which glares on camera under the bright lights. Light blue or pale yellow is a better option.
- No cleavage or bare midriffs. Shirts should be long enough to tuck in.

No sleeveless or short cap sleeve tops.

- No tight fitting clothing. Tops and pants need to be LOOSE fit. Spandex fabric should not be worn. No skinny pants.
- Error on the side of **too modest** or **too dressy**. If in doubt, don't wear it. Clothes considered modest in the secular world may not be modest for a worship leader.
- Nice pants may be worn if you are featured on the platform as a soloist, or sing in an ensemble or praise team.

- Denim jumpers, skirts or dresses are ok.
- Wear the proper foundations – always wear a slip due to the stage lighting.
- No hats or caps or any accessories that draws attention to the wearer.
- Make sure you have color on your face – especially blush and lipstick. The lights on the stage will wash out your face.
- Jewelry should be kept simple.
- Dressy type sandals may be worn. No flip flops or athletic shoes.

SERVICE AND SUNDAY SCHOOL INVOLVEMENT

Sitting under the preaching of the Word is a vital and necessary part of spiritual growth. In addition, it is important for orchestra members to be perceived as part of the congregation and not just “one of the musicians”. For these reasons **each orchestra member stays through one complete service.**

Players exit the stage just before the sermon in each service, and may proceed to the choir loft, balcony, the back of the auditorium or your Sunday School class.

Small group Bible study through the Sunday School is an exciting enhancement to your personal growth. Sunday School is an opportunity to meet others outside of your ministry in an accountable, Bible-centered fellowship. As you study the Bible, pray, and fellowship, wonderful things will happen. Who knows, there may even be a potential orchestra member at your potluck or visiting this next Sunday!

In addition to regularly scheduled services, the orchestra plays for special programs such as “Carol and Candlelight Service” at Christmas, the Memorial Day Concert, and occasionally performs concerts at various locations, either alone or with the Praise Choir.

ACCOMPANYING SOLOIST & ENSEMBLES

In an effort to maximize the use of our instrumentalists, some or all of the orchestra periodically accompanies “special music”. When this occurs please be especially sensitive to dynamics so as to enhance the message of the soloist or ensemble. When trax are utilized the orchestra should direct their attention to the performer(s) so as not to be distracting and to assist the congregation on focusing their attention

the performer(s). On Sundays when we accompany an ensemble, **We will have a 7:15 a.m. sound check on stage.**

TELEVISION ETIQUETTE

Broadcast television recording of a church service requires that the quality of every aspect of that service be at the highest possible level. While we should ALWAYS do our very best for the Master, broadcast TV places our ministry in direct viewer “competition” with every other television show on the air, religious or otherwise. In order to best facilitate the quality of our broadcast ministry, here are a few things to remember:

- When not playing, always follow the action with your eyes and look interested. Respond as though you were in the congregation.
- Talking to each other on stage or other distractions WILL be picked up on camera, and WILL be picked up on mic! PLEASE be careful to focus on the point of action and not be a distraction.
- On occasion the director may make a change in what part you are playing or in the seating arrangement in order to facilitate the broadcast ministry. Please be flexible!
- Please avoid wearing white shirts and/or blouses, as they tend to cause camera glare.

REHEARSAL SCHEDULE

Praise orchestra rehearses each Wednesday evening from 6:00-8:00 p.m., beginning in the Orchestra Rehearsal room and culminating on stage with the choir. The group always rehearses choir accompaniments four weeks ahead of their performance date, solo-ensemble accompaniments and orchestra specials as needed, and congregational accompaniments on a weekly basis.

Rehearsal folders are located in the folder rack on the east wall of the rehearsal room. (refer to “library” section for more detail.) The orchestra goes to the sanctuary at 7:15 pm to rehearse with the choir. We go over the congregational singing as well as the choir number. If we are accompanying an ensemble, we will do a sound check after this.

REHEARSAL ETIQUETTE

The orchestra is a family, and needs times of fellowship and sharing. Therefore, a certain level of discussion in rehearsal is permitted. **HOWEVER, when the discussion negatively affects rehearsal productivity, or disturbs others who need to hear, it becomes counter-productive.** Each member is asked to assume personal responsibility for hearing and following directives from the podium, and for making sure that the rehearsal experience is both enjoyable and profitable for everyone.

Rehearsal dress should be modest so as not to be a distraction. Rehearsals will begin and end on time, unless permission is asked of the group to extend for a brief period for a specific purpose. Those with children in childcare are requested to pick up their children as soon as possible following rehearsal.

(The rehearsal preceding a special production or concert is usually extended by 30 minutes.)



ABSENCE

PROCEDURES

There is a “sign out” calendar located on the bulletin board in the orchestra rehearsal room. Please sign out for any rehearsal or service which you know in advance that you will miss. Section leaders and the director check the calendar on a regular basis so that important gaps may be filled. If you know that you will miss a service for which you are scheduled to play, please inform your section leader as well. If you miss a rehearsal, you are responsible to know the information you missed. Often, a copy of the orchestra newsletter will be sent to absentees, but not always. A copy of this newsletter (The Score) is posted every Thursday on the orchestra website, www.valleybaptist.org/instrumentalministry. However, sometimes musical cuts or changes are discussed in rehearsal for the next Sunday which would not be reflected in the newsletter.

CHILD CARE

We are truly blessed to have the workers and facilities to help care for your children. I am pleased to share with each of you all the ways we can enhance your orchestra experience while your children are here at Valley Baptist Church.



Wednesday evening care begins at 5:45 p.m. for infants through two years old and following our AWANA program for children three through sixth grade. 7th through 12th grade youth can participate in “Amplified” for the Jr. High or “Pulse” for Grades 9-12. Orchestra members are expected to make arrangements for your child/teenager during Sunday morning warm-up as well as choir rehearsal on Wednesday evenings. Please do not allow your child/teenager to “roam” the church property and/or buildings. This is for your protection as well as safety issues for your child/youth.



To check your child in please sign them in at the computers in the lobby of the Children’s building. A slip will be given to you to take to your child’s classroom and given to their teacher.

A security system is used to protect your child and we ask that you follow the steps carefully while admitting your child into care. When picking up your child, check them out at the computer and take the pick up slip to your child’s teacher. They will not be released without the slip. A child will only be released to an adult (age 18 or above), preferably to a parent.

If there is a need to call a parent we will use our pager or call system if possible or a worker will come to get the parent in case of an emergency, so be specific on your location so we may reach you as quickly as possible. If you have any questions or concerns, please do not hesitate to call the Preschool or Children’s ministry at the church office - 393-5683.

INSTRUMENTAL MINISTRY WEB-SITE

The Instrumental Ministry Web-site may be accessed by going to www.valleybaptist.org. - Ministries - Worship and Music - Choir/orchestra downloads (on left side of page). At this site the Score (newsletter) for the past 3 weeks is displayed, as well as current prayer requests.

LIBRARY INFORMATION

Orchestra music is kept in a Folder Cabinet. in the Orchestra Rehearsal room. There are two folders in each slot: Sunday Performance music and Special programs music.

PERFORMANCE MUSIC

- 1) Each member is assigned a compartment in the Folder Cabinet. (This compartment MAY be shared with another section member.)
- 2) The performance music will be in a performance notebook, located in your compartment.
- 3) All selections for performance are arranged in order in this notebook for the correct week. They will include choir accompaniments, calls to worship, welcome songs, orchestra offertories and hymn packages.

Special programs Folder

Contains music for special programs or upcoming music that is being prepared for future services.

ORCHESTRA LIBRARY POLICY!!!

Performance/rehearsal Folders may be taken home so you can PRACTICE, but here are the VERY IMPORTANT stipulations:

- Folders may ONLY be taken home between Wednesday night rehearsal and Sunday, and MUST be in their library rack space from Sunday until Wednesday. That means you may take them with you following REHEARSAL, but they must remain here following Sunday services.
- If you can't make it on a Sunday when your folder is at home with you, the folder MUST be back whether you are or not! Send it with a spouse, a neighbor, or carrier pigeon, but it MUST be here on Sunday.

- If your folder is NOT in the library rack on Monday when we come in to empty and replenish folders, we will put your new music in your slot, and YOU will be responsible to insert NEW music in the correct week and in the correct order and file the old music. You really don't want that responsibility!!!
- If the folder is lost, you will be responsible to replace the folder and weekly tabs.

OTHER GROUPS

The Praise Orchestra is the “flagship” Instrumental Ensemble at Valley Baptist. The responsibilities and requirements of this group exceed those of any other instrumental ensemble at Valley. There are a limited number of chairs on stage, and both minimum and maximum instrumentation requirements. A higher level of playing ability is required, and a greater amount of investment of time is also necessary.

PM WORSHIP BAND–Valley Baptist BIG BAND (VBBB)

- A 10-14 piece band that accompanies the PM service. We meet at 4:30 on Sunday afternoon on the Multi-purpose stage.
- The VBBB is comprised primarily, but not exclusively, of members of the Praise Orchestra.



ACADEMY OF PERFORMING ARTS

Designed to offer private instruction by Christian teachers utilizing church facilities during the week. Call the music office for more information and list of teachers.





OFFICER POSITIONS

PRESIDENT-

Responsibilities:

- meets with the director on a regular basis to evaluate procedure, policy, efficient operation, future needs and spiritual climate of the orchestra.
- presides over all orchestra and officer business meetings.
- is constantly sensitive to the spiritual “temperature” of the orchestra, and to specific and individual needs of its members.
- oversees and assists in the effective operation of the other officers and their responsibilities.
- acts as a liaison between the orchestra and the director, and between officers and the director.

Requirements:

- member of Valley Baptist Church
- faithful in attendance
- respected as a leader, both musically and spiritually.
- must exhibit an attitude of spiritual maturity, optimism, creativity, encouragement and commitment.

VICE PRESIDENT-DEVOTIONAL

Responsibilities:

- assumes presidential responsibilities if necessary.
- assists in developing the spiritual maturity of the orchestra through evaluating and overseeing rehearsal devotionals and discipleship opportunities.
- keeps abreast of prayer needs and other orchestra member needs: advises director as necessary.
- assists in the development of an orchestra evangelism strategy.

Requirements:

- member of Valley Baptist Church
- faithful in attendance
- respected as a leader, both musically and spiritually.
- must exhibit an attitude of spiritual maturity, optimism, creativity encouragement and commitment.

VICE-PRESIDENT SOCIAL

Responsibilities:

- plans social activities and events for the orchestra to foster brotherly love and a spirit of unity
- recognizes orchestra members' birthdays on a regular basis creatively and in a manner in keeping with the orch. philosophy and guidelines
- greets orchestra visitors and makes sure they have been introduced to the orchestra secretary and to the others in the visitors section

Requirements:

- member of Valley Baptist Church
- friendly and loving, with a heart for people
- faithful in attendance

VICE-PRESIDENT SOCIAL ASSISTANT (if needed)

- Assists the social chairperson

SECRETARY

Responsibilities:

- makes sure attendance records are completed accurately for each rehearsal, and turns them in to the instrumental music secretary.
- oversees collecting money and accounting for tape sales, clothing sales or other financial needs as necessary.

Requirements:

- member of Valley Baptist Church
- above reproach in integrity
- faithful in attendance
- must work well with people, friendly and outgoing.

ASSISTANT LIBRARIAN

- Appointed by the director to assist the Librarian.

Responsibilities:

- assists appointed librarian in filling rehearsal folders and performance folders.
- assists director during rehearsals in the case of missing, wrong or incomplete parts.
- makes sure all music is filed back correctly after use.



APPOINTED POSITIONS

SECTION LEADER

Responsibilities:

- greets all orchestra visitors and has them complete a visitors card-introduces visitors to the orchestra and gives completed card to the director
- are responsible to make sure that their section has every part covered for each performance and rehearsal
- lead their sections musically
- assist in assigning seating for their sections
- assist in assigning solos for their section
- invites new members to hear the sermon with them

Each section includes the following minimum instrumentation per service under ideal circumstances.

Violins:	2-6	Percussion:	2-3	Bass:	1
Viola:	1-3	Soprano Sax:	1	Drums:	1
Cello:	3	Bari Sax:	1	Guitar:	1
Arco Bass:	1-2	Piano:	1		
Flutes:	2-4	Synth.:	1		
Organ:	1	Clarinets:	2-4		
Oboe:	1	Trumpets:	3-4		
Bassoon:	1	Horns:	2-4		
Bass Clar.:	1	Bones:	3-4		
E ^b Alto Sax:	1-2	Baritone:	1		
T. Sax:	1-2	Tuba:	1		

The Section Leader keeps an up-to-date roster of players for each Sunday a.m. service, and makes sure that the director has an up-to-date copy for the office files.

ASSIGN SOLOS

Everyone who is capable should get an occasional solo. Consider tone quality, intonation, confidence, key ability and range when assigning specific solos to specific players. Balance giving every capable player opportunity with the importance of the musical moment and the overall musical integrity of any given selection.

TECHNICAL ASSISTANCE

Call shots on bowing, trill fingerings, intonation, fingering, mouthpiece and reed selection, phrasing and breathing, etc. AS NEEDED

MUSICAL LEADERSHIP

(plus leading in musical discernment and taste)

As leaders, you are expected to be both faithful and prompt in attendance, and sensitive to the spiritual and physical needs of the players in your sections. Watch for signs of discouragement and frustration and be an encourager whenever possible. Your section should sense loving affirmation rather than a spirit of control.

Thank you for ministering both to your section and to the “body” of orchestra members in this capacity.

CHECK sign-out calendar in orchestra room weekly

OFFICER NOMINATIONS AND ELECTIONS

The **OFFICER** nomination process occurs in the last week of April as follows:

1st week: You’ll receive a list of officer positions and eligible candidates for a week, asking God for guidance on who would be the most qualified candidate for each position.

2nd week: You’ll receive a ballot listing each position and places for you to list 1st and 2nd choices for each. You’ll fill them out and hand them in.

The nominating committee will consist of the Director, President, Vice-president - Devotional, Vice-president - social and the secretary.

They will review and tabulate the results and contact the 1st selections for each officer position. If that person agrees to be nominated, they will be considered the nominee for that office. If the #1 selected nominee cannot accept the nomination, then the committee will ask the #2 if they would be willing to serve in that capacity.

When the slate of nominees is full, the orchestra will vote on the entire slate at one time as the next year's officers.

Officers will assume responsibilities June 1 and will serve for a year.

NOTE: Each year the VP-devotional will be considered to be the president-elect for the following year, hence the office of "President" is not directly voted on by the membership.

OFFICER NAMES AND PHONE NUMBERS
2014-2015

PRESIDENT

Jamie Thornberry

V.P. DEVOTIONAL

John March

V.P. SOCIAL, Co-chairman

Cathy Miller

SECRETARY

Sarah Cornell



SECTION LEADER NAMES, PHONE NUMBERS, & EMAIL ADDRESSES

LOW BRASS SECTION

(Trombone, Tuba, Baritone)

Jason Armistead

FLUTE SECTION

Sarah Cornell

CLARINET SECTION

Cathy Miller

HORN SECTION

John March

SAX/DBL. REEDS SECTION

Chuck Degan

Bob Storar

TRUMPET SECTION

Tim Stephens

STRING SECTION

Marci Maynard

RHYTHM SECTION

(El. Bass, Drums and Guitar)

Daniel Tomlinson

PERCUSSION

Shafin Sitorius

KEYBOARDS SECTION

(Synth, Organ, etc.)

Tom Creswell



ANNIVERSARY ROSTER



JANUARY

Richard & Linda French	1
Susie & Gary Blakley	16
Manny & Anita Galaviz	17
Joel & Wanda Swisher	28

FEBRUARY

Rick & June Stevens 14

MARCH

Leslie & Bill Davis 19
John & Anna Wagner 20
John & Barbara March 23
Cathy & Mike Miller 29

APRIL

Tom & Lynette Creswell 8

MAY

Marsha & Ryan Eliason 4
Cindy & Rich Zimmer 9
Jim & Gay Harlander 19
Linda & Carl Sparks 22

JUNE

Richard & Marjorie Gonzales 13
Reggie & Dahlia Langendoerfer 14
Rollie & Dottie Moore 14
Mickey & Kirsten Murray 28

JULY

Mike & Linda Ardis 2
Jason & Jaime Armistead 10

AUGUST

Tracy & Mark Fessia 2
Elaine & Paul Cottrell 2

SEPTEMBER

OCTOBER

NOVEMBER

Roy & Ellen Patrick 6

DECEMBER

Jamie & Darren Thornberry 2

BIRTHDAY ROSTER

JANUARY

Covarrubias, Leticia	1-2	TC Baritone
Wilmot, Donna	1-6	Keyboard
Cornell, Sarah	1-9	Flute
Saecker, Kristi	1-20	Flute
Blakley, Susie	1-29	Piano

FEBRUARY

Miller, Cathy	2-12	Clarinet	
Craddock, Chris	2-15	Tenor Sax	(Big Band)
Thornberry, Jamie	2-19	Keyboard	
Armistead, Jason	2-20	Trombone/Conductor	

MARCH

Tomlinson, Daniel	3-2	Drums	
Noia, Becky	3-3	Piano	(Big Band)
Storar, Bob	3-14	Alto Sax	
March, John	3-23	F. Horn	
French, Richard	3-27	Tuba	
Patrick, Roy	3-30	Percussion	

APRIL

Swisher, Joel	4-3	Clarinet
Wagner, John	4-21	Trombone

MAY

Park, Grace	5-5	Violin
Eliason, Lacey	5-10	Violin
Svedberg, Dana	5-15	Clarinet
Montoya, Fernando	5-17	Electric Bass
Creswell, Tom	5-19	Keyboards
Gollehon, Sara	5-19	Viola
Fessia, Tracy	5-20	Violin
Whitehead, Pete	5-24	F. Horn
Davis, Leslie	5-27	Flute

JUNE

Murray, Mickey	6-8	Trumpet
Harlander, Jim	6-14	Trumpet
Degan, Chuck	6-22	Bari Sax

JULY

Cornell, Rebekah	7-5	Bass Clarinet
Ardis, Mike	7-7	Trombone
Sparks, Linda	7-18	Violin
Zimmer, Cindy	7-25	Violin
Masengale, Matt	7-26	Guitar
Sitorius, Shafin	7-29	Percussion

AUGUST

Eliason, Marsha	8-7	Violin
Galaviz, Manny	8-15	Viola
Murray, Kirsten	8-24	Viola
Kroeker, Hannaly	8-26	BC Baritone

SEPTEMBER

Stevens, Rick	9-3	Guitar
Comelli, Isaac	9-21	TC Baritone
Maynard, Marci	9-27	Violin

OCTOBER

Moore, Rollie	10-20	TC Baritone
Stephens, Tim	10-20	Trumpet

NOVEMBER

Gonzales, Richard	11-6	Tenor Sax
Nelson, Ben	11-17	Percussion
Cottrell, Elaine	11-19	Clarinet

DECEMBER

Luter, Alexis	12-9	String Bass
---------------	------	-------------



**"SING TO HIM A NEW SONG; PLAY
SKILLFULLY AND SHOUT FOR JOY."**

PSALM 33:3